



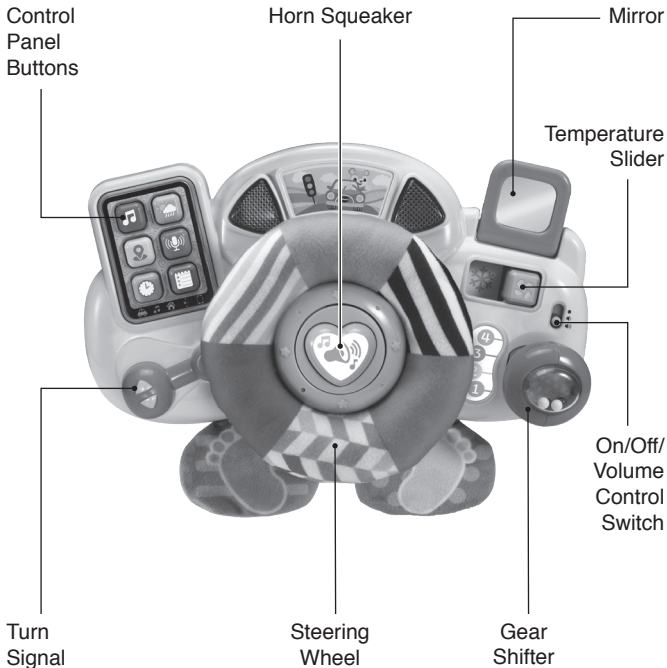
# Instruction Manual

## Bopping & Cruising Baby Driver™



# INTRODUCTION

Thank you for purchasing the **Bopping & Cruising Baby Driver™**! Put baby in the driver's seat with this exciting driver that attaches to strollers. Cool car features and interactive dashboard apps are fun to play with on the floor or on the go.



# INCLUDED IN THE PACKAGE

- **Bopping & Cruising Baby Driver™**
- Quick Start Guide

## WARNING

All packing materials such as tape, plastic sheets, packaging locks, removable tags, cable ties, cords and packaging screws are not part of this toy, and should be discarded for your child's safety.

## NOTE

Please save this Instruction Manual as it contains important information.

## ATTENTION

Pour la sécurité de votre enfant, débarrassez-vous de tous les produits d'emballage tels que rubans adhésifs, feuilles de plastique, attaches, étiquettes, cordons et vis d'emballage. Ils ne font pas partie du jouet.

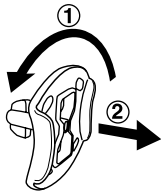
## NOTE

Il est conseillé de sauvegarder ce manuel d'utilisation car il comporte des informations importantes.

## WARNING

With the **Bopping & Cruising Baby Driver™** safety comes first. To ensure your child's safety, adult assembly is required. Never use the **Bopping & Cruising Baby Driver™** as a handle. Do not use in moving vehicles. Do not add additional strings or straps. Possible entanglement or strangulation injury when attached to cribs or playpens/play yards. Do not attach to cribs or playpens/play yards.

### Unlock the packaging locks:

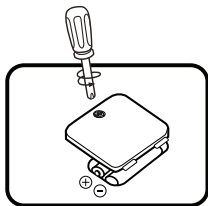


- ① Turn the packaging locks 90 degrees counterclockwise several times.
- ② Pull out and discard the packaging locks.

# GETTING STARTED

## Battery Removal and Installation

1. Make sure the unit is turned **Off**.
2. Find the battery cover located on the back of the unit, use a screwdriver to loosen the screw, and then open the battery cover.
3. Remove old batteries by pulling up on one end of each battery.
4. Install 2 new AA (AM-3/LR6) batteries following the diagram inside the battery box. (For best performance, alkaline batteries or fully charged Ni-MH rechargeable batteries are recommended.)
5. Replace the battery cover and tighten the screw to secure.



### WARNING:

Adult assembly required for battery installation.  
Keep batteries out of reach of children.



### ATTENTION :

Les piles ou accumulateurs doivent être installés par un adulte.  
Tenir les piles ou accumulateurs hors de portée des enfants.

## IMPORTANT: BATTERY INFORMATION

- Insert batteries with the correct polarity (+ and -).
- Do not mix old and new batteries.
- Do not mix alkaline, standard (carbon-zinc) or rechargeable batteries.
- Only batteries of the same or equivalent type as recommended are to be used.
- Do not short-circuit the supply terminals.
- Remove batteries during long periods of non-use.
- Remove exhausted batteries from the toy.
- Dispose of batteries safely. Do not dispose of batteries in fire.

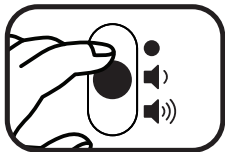
### RECHARGEABLE BATTERIES:

- Remove rechargeable batteries (if removable) from toy before charging.
- Rechargeable batteries are only to be charged under adult supervision.
- Do not charge non-rechargeable batteries.

## PRODUCT FEATURES

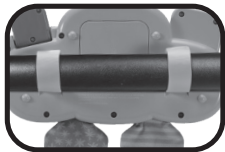
### 1. On/Off/Volume Control Switch

To turn the unit **On**, slide the **On/Off/Volume Control Switch** to the Low volume (🔊) or High volume (🔊)) position. You will hear fun sounds, a phrase and a song. To turn the unit **Off**, slide the **On/Off/Volume Control Switch** to the **Off** ● position.



### 2. Stroller Attachment

Position the **Bopping & Cruising Baby Driver™** on the stroller bar. Using the straps on the back of the toy, fasten each side of the toy securely to the stroller bar using the hook and loop closures, ensuring they are securely fastened.



### 3. Automatic Shut-Off

To preserve battery life, the **Bopping & Cruising Baby Driver™** will automatically shut off after approximately 45 seconds without input. The unit can be turned on again by activating the electronic features. Turning the steering wheel will not turn the unit back on.

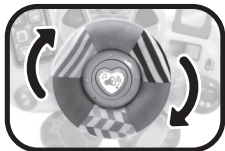
### NOTE

If the unit powers down or if the light fades out during play, please install a new set of batteries.

## ACTIVITIES

### 1. Steering Wheel

Turn the **Steering Wheel** to pretend to drive, you will hear fun car sounds, friendly phrases and music. The lights will flash with the sound.



### 2. Control Panel Buttons

Press one of the six **Control Panel Buttons** to learn colors, hear songs, playful melodies, fun phrases and sounds related to the button graphics. The lights will flash with the sound.



### 3. Gear Shifter

Push or pull the **Gear Shifter** to learn about opposites through imaginative phrases, sounds and short tunes. The lights will flash with the sound.



#### 4. Turn Signal

Slide the **Turn Signal** lever to hear realistic car sounds and imaginative phrases. The lights will flash with the sound.



#### 5. Temperature Slider

Slide the **Temperature Slider** to pretend to choose heating or cooling mode while driving, hear fun sounds and phrases. The lights will flash with the sound.



#### 6. Horn Button

Press the **Horn button** to hear a fun squeaking sound.



## MELODIES

1. Yankee Doodle
2. Glow Worm
3. Chicago, That Toddlin' Town
4. William Tell Overture
5. The Wheels on the Bus
6. Looby Loo
7. Hickory, Dickory, Dock
8. Funiculi, Funicula
9. Colonel Bogey March
10. A-Tisket, A-Tasket

# SONG LYRICS

## Song 1

Beep, beep!  
Wave hello to friends you know.  
Beep, beep!  
Wave good-bye, it's time to go!

## Song 2

Start the car, where should we go?  
Turn the wheel, let's go, go, go!

## Song 3

Drive through the city,  
Drive through the country,  
Drive through the forest,  
There's lots to see.

## Song 4

Red light means it's time to stop,  
And yellow means it's time to slow.  
Green light means it's time to go.  
These are the rules of the road!

# CARE & MAINTENANCE

1. Keep the unit clean by wiping it with a slightly damp cloth.
2. Keep the unit out of direct sunlight and away from any direct heat sources.
3. Remove the batteries if the unit will not be in use for an extended period of time.
4. Do not drop the unit on hard surfaces and do not expose the unit to moisture or water.
5. The soft fabric steering wheel and soft pedals are surface washable only.



# TROUBLESHOOTING

If for some reason the unit stops working or malfunctions, please follow these steps:

1. Turn the unit **Off**.
2. Interrupt the power supply by removing the batteries.
3. Let the unit stand for a few minutes, then replace the batteries.
4. Turn the unit **On**. The unit should now be ready to use again.
5. If the unit still does not work, install a new set of batteries.

## IMPORTANT NOTE

If the problem persists, please call our **Consumer Services Department** at **1-800-521-2010** in the U.S., **1-877-352-8697** in Canada, or by going to our website **vtechkids.com** and filling out our **Contact Us** form located under the **Customer Support** link. Creating and developing VTech products is accompanied by a responsibility that we take very seriously. We make every effort to ensure the accuracy of the information, which forms the value of our products. However, errors sometimes can occur. It is important for you to know that we stand behind our products and encourage you to contact us with any problems and/or suggestions you might have. A service representative will be happy to help you.

## **NOTE**

This equipment has been tested and found to comply with the limits for a Class B digital device, pursuant to Part 15 of the FCC Rules. These limits are designed to provide reasonable protection against harmful interference in a residential installation. This equipment generates, uses and can radiate radio frequency energy and, if not installed and used in accordance with the instructions, may cause harmful interference to radio communications. However, there is no guarantee that interference will not occur in a particular installation. If this equipment does cause harmful interference to radio or television reception, which can be determined by turning the equipment off and on, the user is encouraged to try to correct the interference by one or more of the following measures:

- Reorient or relocate the receiving antenna.
- Increase the separation between the equipment and receiver.
- Connect the equipment into an outlet on a circuit different from that to which the receiver is connected.
- Consult the dealer or an experienced radio/TV technician for help.

## **CAUTION**

Changes or modifications not expressly approved by the party responsible for compliance could void the user's authority to operate the equipment.

### **Supplier's Declaration of Conformity**

#### **47 CFR § 2.1077 Compliance Information**

Trade Name: VTech®  
Model: 5675  
Product Name: Bopping & Cruising Baby Driver™  
Responsible Party: VTech Electronics North America, L.L.C.  
Address: 1156 W. Shure Drive, Suite 200  
Arlington Heights, IL 60004  
Website: vtechkids.com

THIS DEVICE COMPLIES WITH PART 15 OF THE FCC RULES. OPERATION IS SUBJECT TO THE FOLLOWING TWO CONDITIONS: (1) THIS DEVICE MAY NOT CAUSE HARMFUL INTERFERENCE, AND (2) THIS DEVICE MUST ACCEPT ANY INTERFERENCE RECEIVED, INCLUDING INTERFERENCE THAT MAY CAUSE UNDESIRE OPERATION.

**Visit our website for more  
information about our products,  
downloads, resources and more.**

***vtechkids.com***  
***vtechkids.ca***

Read our complete warranty policy online at  
***vtechkids.com/warranty***  
***vtechkids.ca/warranty***

